

S10

RESIDENTIAL PREPAID WATER METER

LXSG 15-25



APPLICATION

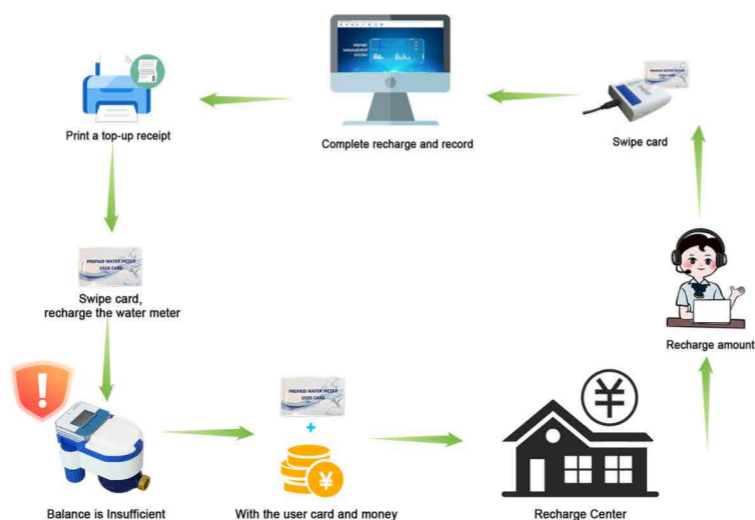
LXSG 15-25 IC card prepaid water meter is designed to solve the problem of charging water meters for residential use. It is widely used in apartment buildings, shopping malls, villas and ordinary residential scenes.

- Pay now, water later;
- IP68 protection level;
- Mechanical and electronic separable design for better maintenance;
- Card type recharge will be more convenient and safe;
- The IC card and the water meter will be bound to each other to avoid additional losses and dangers;
- Regular automatic valve rotation to reduce scale adhesion;
- High capacity battery ensures battery life of more than 8 years.

TECHNICAL FEATURES

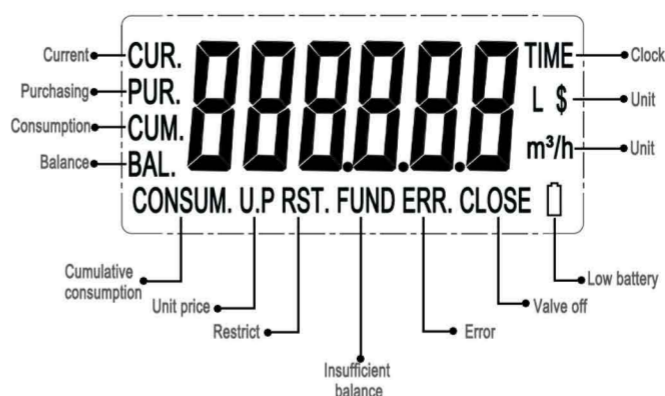
- Multi-flow, dry type;
- Q3/Q1 = R100/160(optional);
- Supports installation at Horizontal;
- IP68 suitable for outdoor installations;
- Temperature class T30, T50, T90;
- Environment class E1/M1;
- Nominal pressure PN10;
- U10/D5, straight pipe sections required before or after the meter;
- Brass and nylon bodies are available.

SYSTEM CONSTRUCTION



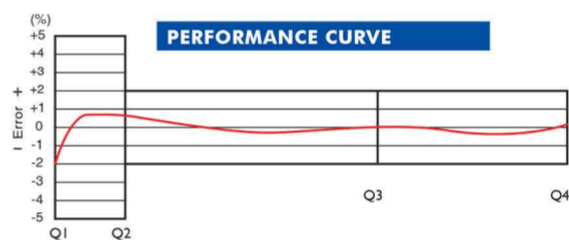
LCD INDICATIONS AND ALARMS

- Current;
- Purchasing;
- Consumption;
- Balance;
- Cumulative consumption;
- Unit price;
- Restrict;
- Insufficient balance;
- Error
- Valve off
- Low battery
- Unit
- Clock

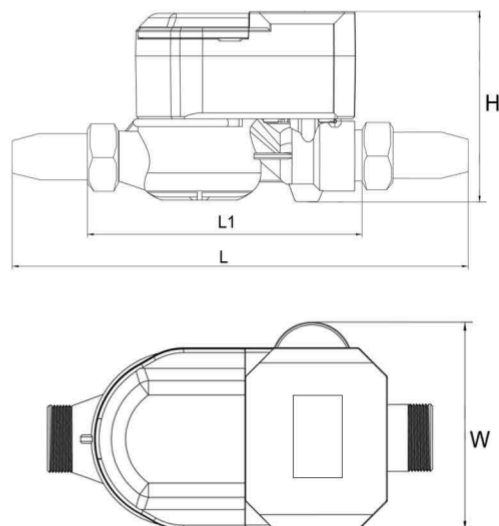


TECHNICAL FEATURES

Nominal diameter	mm	15	20	25
Overload flow rate	Q4	m³/h 3,125	5	7.875
Nominal flow	Q3	m³/h 2,5	4	6.3
Transitional flow	Q2	L/h 40	25	64
Min flow	Q1	L/h 25	15.6	40
Measuring range	Q3/Q1	R100	R160	R100
Max reading	Mech	L	99999.9999	R160
Max reading	Elec	L	999999	R100
Power supply	V	Built-in lithium battery	DC 3.6V	



Caliber	Unit	DN15	DN20	DN25
L	mm	258	299	345
L1	mm	165	195	225
W	mm	90	90	90
H	mm	110	110	110
Meter thread		G $\frac{3}{4}$ B	G1B	G1 $\frac{1}{4}$ B
Connecting Pipe thread(D)		R $\frac{1}{2}$	R $\frac{3}{4}$	R1



Make every drop of water more valuable