

S15

RESIDENTIAL ULTRASONIC WATER METER

LXC 15-20



APPLICATION

S15 LXC 15-20 Ultrasonic water meter is designed for accurate measurement of cold water consumption in households, apartment buildings, and commercial premises.

- Have more accurate measurements;
- No moving parts design to reduce wear;
- Reliable design supports long-term stable operation;
- The water consumption value can still be accurately obtained at a low flow rate of 4L/h;
- Record total volume as small as 1mL;
- 9 digits LCD. Total volume and instantaneous flow rate indication;
- Low power consumption circuit board design extends service life up to 12 years;
- Ready for AMR with wired and wireless communication technologies.

AMR READY

- Wired: RS485 modbus;
- Wired: Pulse;
- Wireless: LoRa, LoRaWAN (EU863-870, AS923, AU915-928, US902-928, IN865-867 channel plans);
- Wireless: NB-IoT (CoAP);
- Wireless: GPRS(2G/4G);
- Infrared reading.

TECHNICAL FEATURES

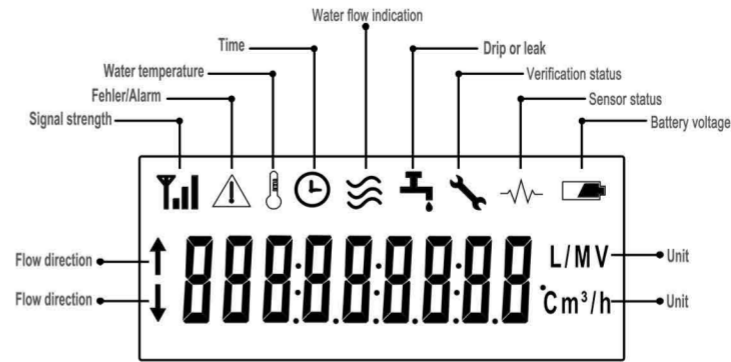
- No measurement of air;
- Nominal flow 2.5/4.0 m³/h;
- Q3/Q1 = R250/R400/800 (optional);
- Supports installation at any position or angle;
- IP 68 suitable for outdoor installations;
- Temperature class T30, T50, T70(customizable);
- Environment class E1/M1;
- Nominal pressure PN10;
- Bi-directional flow measurements;
- U5/D3, straight pipe sections required before or after the meter;
- Durable composite body;
- Display with error and alarm codes including leakage detection.

WIRELESS AMR INTERFACES



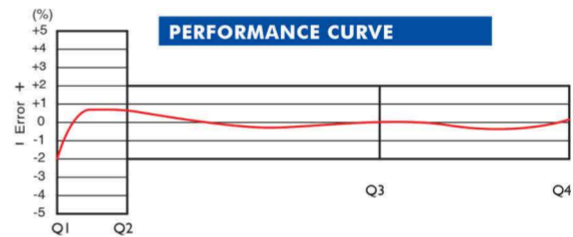
LCD INDICATIONS AND ALARMS

- Flow direction;
- Signal strength;
- Fehler/Alarm;
- Water temperature;
- Time;
- Water flow indication;
- Drip or leak;
- Verification;
- Sensor status
- Battery voltage
- Unit

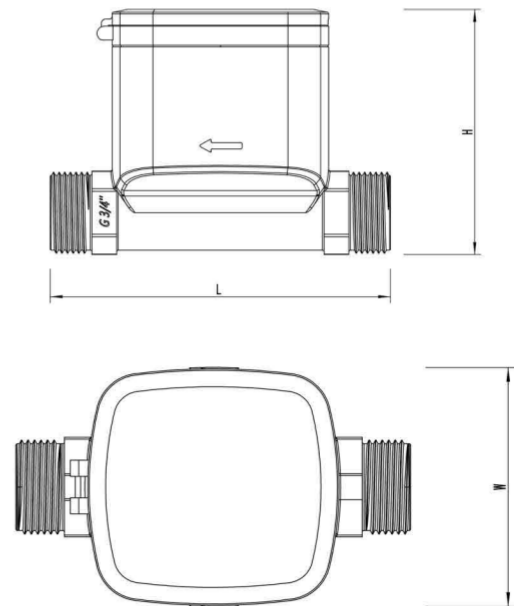


TECHNICAL FEATURES

Nominal diameter		mm	15	20		
Overload flow rate	Q4	m³/h	3,125		5	
Nominal flow	Q3	m³/h	2,5		4	
Transitional flow	Q2	L/h	16	10	3.2	5
Min flow	Q1	L/h	10	6.25	2	3.125
Measuring range	Q3/Q1		R250	R400	R250	R400
Minimum reading	mL		999.999999			
Max reading	L		999999.999			
Power supply	V		Built-in lithium battery DC 3.6V			



Diameter	Unit	DN15		DN20	
L	mm	110	165	130	195
L1	mm	205	260	235	300
W	mm	67		67	
H	mm	80		85	
Meter thread		G $\frac{3}{4}$ B		G1B	
Connecting Pipe thread (D)		R $\frac{1}{2}$		R $\frac{3}{4}$	



Make every drop of water more valuable